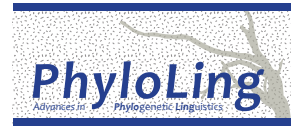


Meeting Darwin's last challenge:
toward a global tree of human languages and genes

ERC Advanced Grant 295733, LanGeLin



Advances in Phylogenetic Linguistics

Ragusa Ibla, Teatro Donnafugata

July 15-17, 2013

PROGRAM



Monday, July 15

- 10.00 *Opening*
- 10.30 - 11.30 **David Lightfoot** (Georgetown)
Nothing in linguistics makes sense except in the light of change
- 11.30 - 12.30 **Giuseppe Longobardi** (York), **Andrea Sgarro** (Trieste),
Luca Bortolussi (Trieste), **Giuseppina Silvestri** (Cambridge),
Andrea Ceolin (Trieste), **Cristina Guardiano** (Modena e Reggio Emilia)
The historical reality of parametric variation
- 12.30 *Posters*
Lunch (Teatro Donnafugata, foyer)
- 15.30 - 16.30 **Cedric Boeckx** (ICREA/Barcelona)
The locus of logodiversity: implications for phylogenetic linguistics
- 16.30 - 17.30 **Charles Yang** (Philadelphia)
Predicting language change
- 18.30 ***Visit to Valle dell'Acate, Wine Reception***

Tuesday, July 16

- 09.30 - 10.30 **Hilda Koopman** (UCLA), **Dominique Sportiche** (UCLA)
Grounding the study of linguistic variation
- 10.30 - 11.30 **Silvia Ghirotto** (Ferrara), **Francesca Tassi** (Ferrara),
Andrea Benazzo (Ferrara), **Cristina Guardiano** (Modena e Reggio Emilia),
Guido Barbujani (Ferrara), **Giuseppe Longobardi** (York)
Across language families: explorations in genomic and linguistic variation
in Europe
- 11.30 - 12.00 *Break* (Teatro Donnafugata, foyer)
- 12.00 - 13.00 **Tecumseh Fitch** (Vienna)
Glossogeny and phylogeny: ontogeny as the middle term
- 16.30 ***Guided tour: Castello di Donnafugata, Punta Secca, Marina di Ragusa
Dinner (on the beach), Lido Azzurro Ristorante da Serafino
Guided tour: Scicli, Modica***

Wednesday, July 17

- 10.00 - 11.00 **Theresa Biberauer** (Cambridge), **Ian Roberts** (Cambridge)
Emergent parameters: hierarchies and phylogenies
- 11.00 - 12.00 **Peter Forster** (Cambridge)
Reconstructing language prehistory using phylogenetic network methods
- 12.00 - 13.00 **Anna Maria Di Sciullo** (UQAM)
Phylogenetic trees, phylogenetic networks and microparameters
- 13.00 *Lunch* (Teatro Donnafugata, foyer)
- 15.00 - 16.00 **Russel Gray** (Auckland)
Language phylogenies: rates, dates and structural traits
- 16.00 - 17.00 **Robin Ryder** (Paris)
A stochastic Dollo model of lexical change through time
- 17.00 - 17.30 *Break* (Teatro Donnafugata, foyer)
- 17.30 - 18.30 **Cristina Guardiano** (Modena e Reggio Emilia), **Alessio Boattini** (Bologna),
Stefania Sarno (Bologna), **Marilisa Carta** (Bologna),
Donata Luiselli (Bologna), **Davide Pettener** (Bologna)
Insights into genetic and linguistic structures of Sicily and Southern Italy.
First steps towards an integrated perspective
- 18.30 *Closing remarks*
- 21.00 **Dinner (Ragusa Ibla), Quattro Gatti**

Posters

- A. Ceolin** (Trieste): Syntactic Trees and Parsimony analysis
- M. Irimia** (York): Non canonical, but still structural
- D. Michelioudakis** (York): Rethinking the syntactic status and the parametrisation of possessive clitics. Evidence from the diachrony of Greek
- L. Pagani** (Cambridge), **A. Boattini** (Bologna): In search of the best measure for syntactic distances and their implications
- S. Sarno** (Bologna), **M. Carta** (Bologna), **G. Ferri** (Modena e Reggio Emilia), **M. Alù** (Modena e Reggio Emilia), **S. Tofanelli** (Pisa), **L. Sineo** (Palermo), **D. Luiselli** (Bologna), **D. Pettener** (Bologna): A patchwork of genes and cultures. Insights into the population history of Sicily and Southern Italy
- S. Ghirotto** (Ferrara), **M. Mezzavilla** (Trieste), **F. Tassi** (Ferrara), **S. Torres Villaça** (Ferrara), **L. De Santi** (Ferrara), **G. Barbujani** (Ferrara): Early human dispersal from Africa. A model-based test of two hypotheses

www.centrostudifelicianorossitto.it/langelin
cristina.guardiano@unimore.it



Funded by
the European Union



European Research Council
Established by the European Commission

THE UNIVERSITY *of* York



D C E Dipartimento di
Comunicazione ed Economia

ce@
Centro E-learning di Alessio


Teatro Donnafugata

